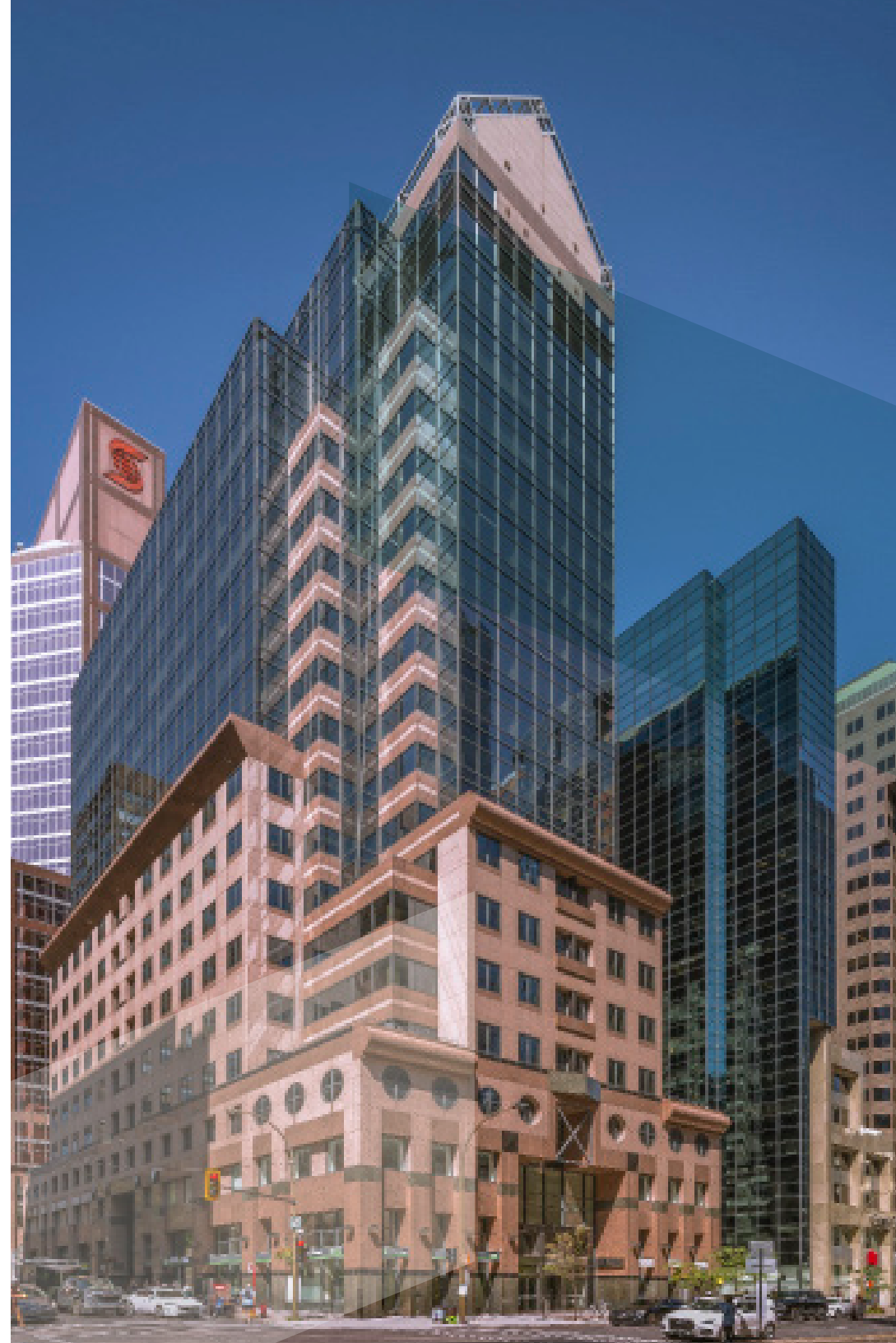




# 999 DE MAISONNEUVE



# 999 DE MAISONNEUVE

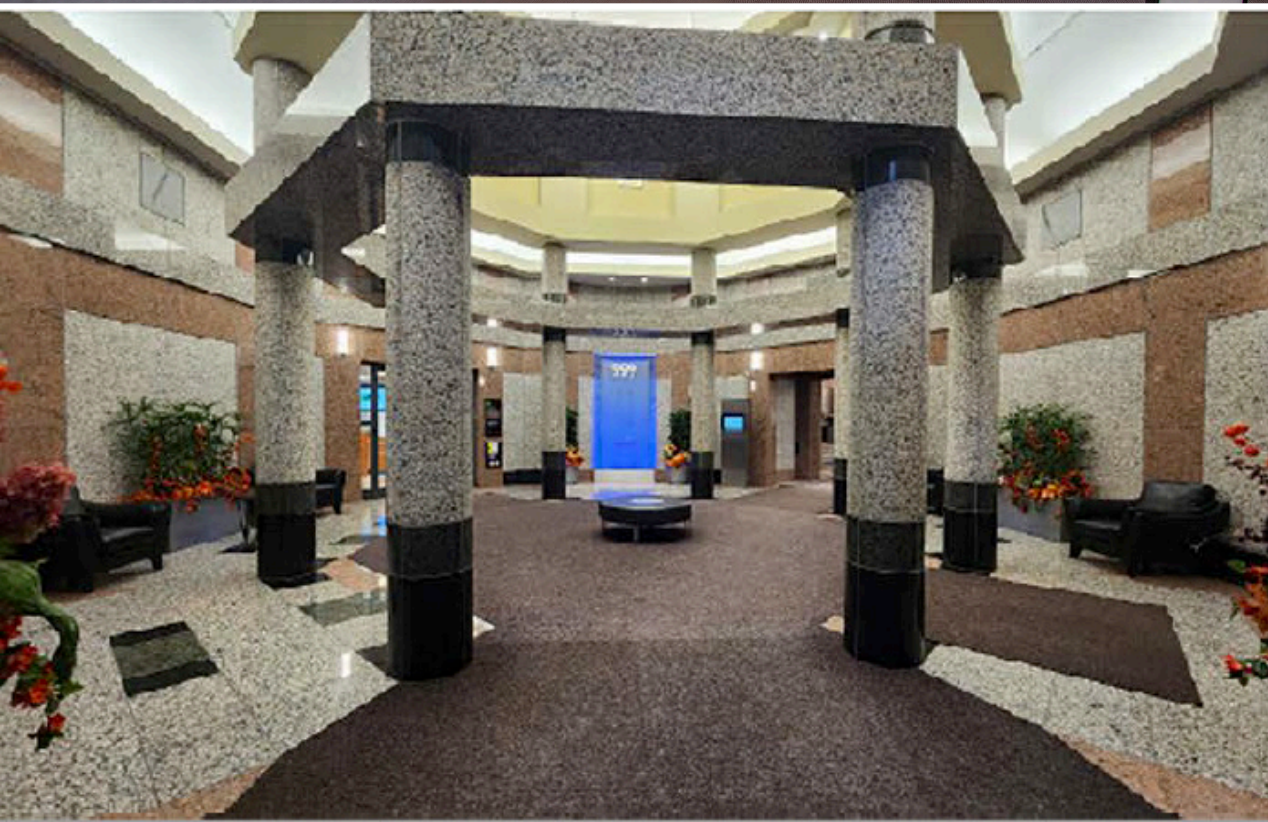
- 18 floors
- Built in 1990
- Building area: 230,942 Sq.Ft.
- BOMA BEST Silver
- Security 24/7
- Underground parking
- Secure bicycle parking
- Conference Centre
- Private gym
- Near Peel and McGill metro stations as well as the downtown REM station
- Connected to the underground network
- Near Dorchester Square
- 900 metres from Mont-Royal walking path access
- in proximity to multiple services, restaurants and boutiques













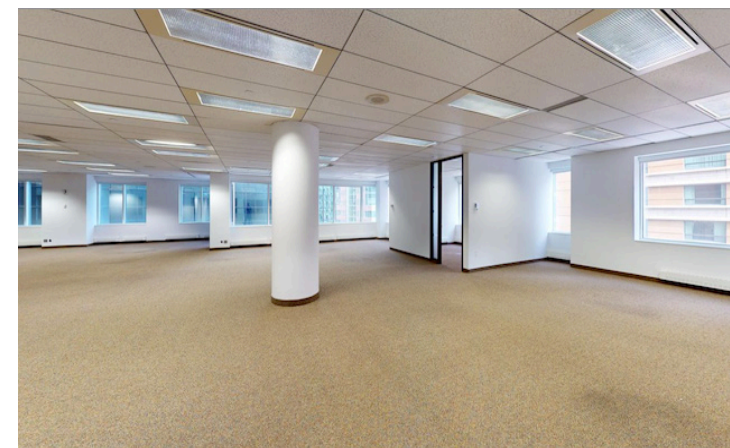
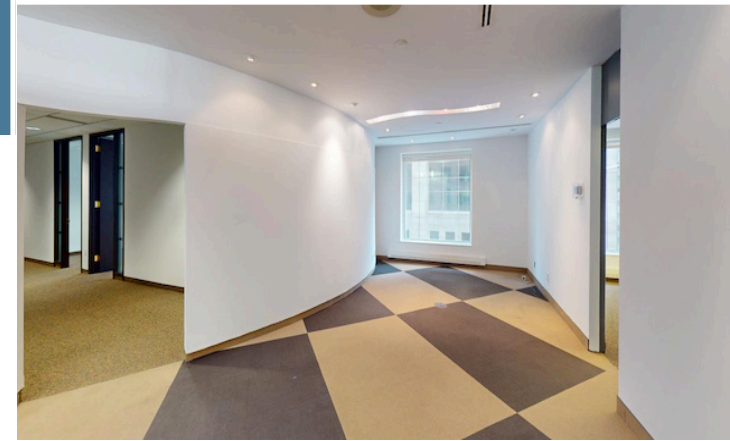
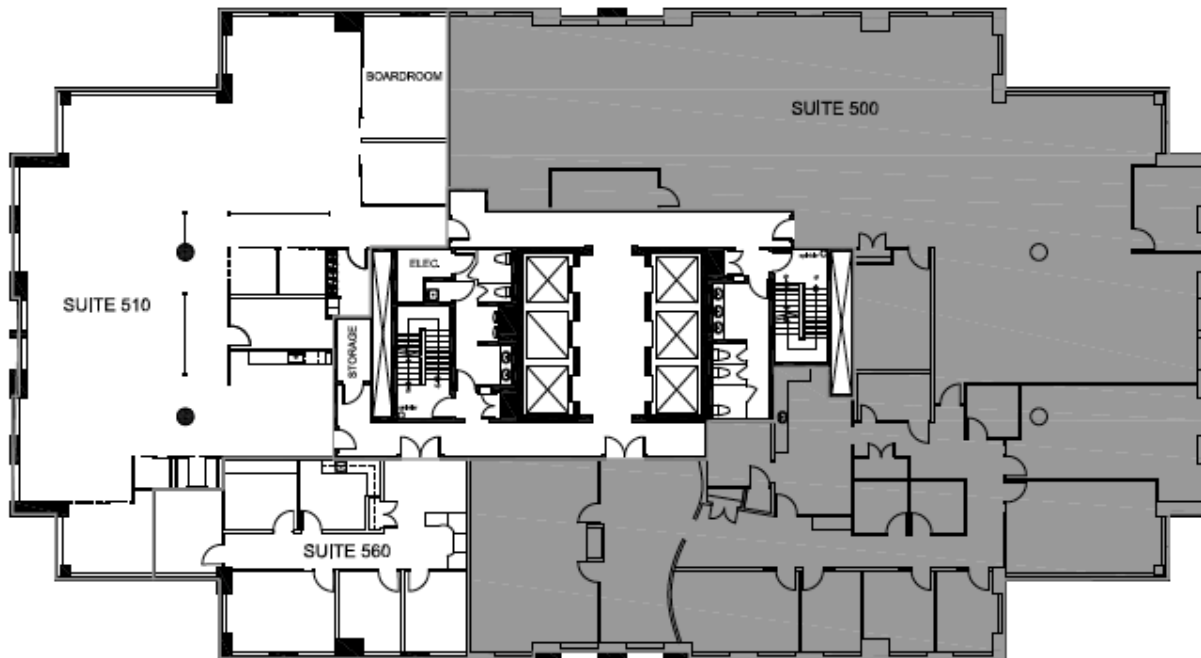
SUITE

500

9,331

SQ.FT.

Suite 500 offers a bright, contemporary environment, with a variety of spaces including closed offices, open areas, meeting rooms and a kitchen. Don't miss this opportunity!



#### ADDITIONAL RENT 2025

Total	\$29.89
Realty tax	\$10.34
Utilities	\$1.31
Operating expenses	\$18.24

#### PARKING

Not reserved \$280/month+tx

#### DOMINIQUE SAUCIER

Vice-President, Leasing

+ 1 514 686-9497

[dominique.saucier@bgo.com](mailto:dominique.saucier@bgo.com)

[View Online](#)

[Virtual Tour](#)